

Архангельск (8182)63-90-72
Астана (7172)727-132
Астрахань (8512)99-46-04
Барнаул (3852)73-04-60
Белгород (4722)40-23-64
Брянск (4832)59-03-52
Владивосток (423)249-28-31
Волгоград (844)278-03-48
Вологда (8172)26-41-59
Воронеж (473)204-51-73
Екатеринбург (343)384-55-89
Иваново (4932)77-34-06

Ижевск (3412)26-03-58
Иркутск (395)279-98-46
Казань (843)206-01-48
Калининград (4012)72-03-81
Калуга (4842)92-23-67
Кемерово (3842)65-04-62
Киров (8332)68-02-04
Краснодар (861)203-40-90
Красноярск (391)204-63-61
Курск (4712)77-13-04
Липецк (4742)52-20-81
Киргизия (996)312-96-26-47

Магнитогорск (3519)55-03-13
Москва (495)268-04-70
Мурманск (8152)59-64-93
Набережные Челны (8552)20-53-41
Нижний Новгород (831)429-08-12
Новокузнецк (3843)20-46-81
Новосибирск (383)227-86-73
Омск (3812)21-46-40
Орел (4862)44-53-42
Оренбург (3532)37-68-04
Пенза (8412)22-31-16
Казахстан (772)734-952-31

Пермь (342)205-81-47
Ростов-на-Дону (863)308-18-15
Рязань (4912)46-61-64
Самара (846)206-03-16
Санкт-Петербург (812)309-46-40
Саратов (845)249-38-78
Севастополь (8692)22-31-93
Симферополь (3652)67-13-56
Смоленск (4812)29-41-54
Сочи (862)225-72-31
Ставрополь (8652)20-65-13
Таджикистан (992)427-82-92-69

Сургут (3462)77-98-35
Тверь (4822)63-31-35
Томск (3822)98-41-53
Тула (4872)74-02-29
Тюмень (3452)66-21-18
Ульяновск (8422)24-23-59
Уфа (347)229-48-12
Хабаровск (4212)92-98-04
Челябинск (351)202-03-61
Череповец (8202)49-02-64
Ярославль (4852)69-52-93

<https://alaval.nt-rt.ru> || avb@nt-rt.ru

МЕМБРАННЫЕ ФИЛЬТРЫ

Зажимные фитинги



Зажимные фитинги играют ключевую роль в обеспечении герметичных соединений между различными типами трубопроводов и компонентами, используемыми в мембранных фильтрационных установках. Зажимные фитинги Альфа Лаваль разработаны с учетом этого особого требования

Alfa Laval Housings

Auxiliary Membrane Filtration Equipment

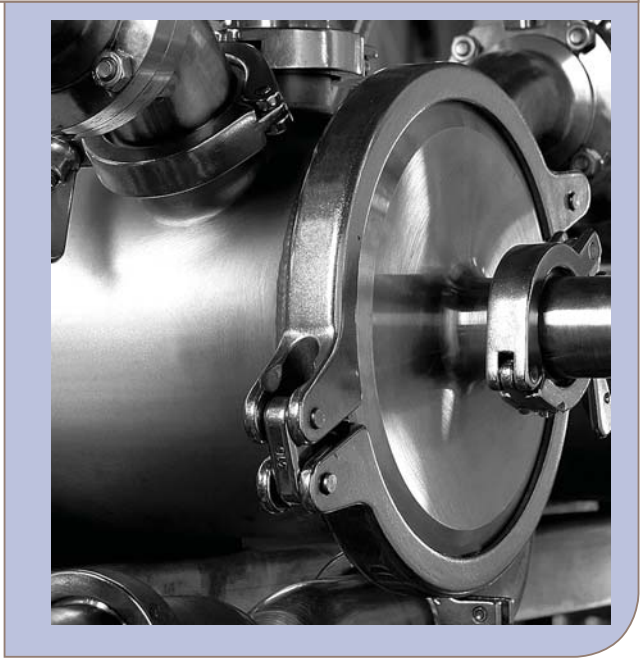
Alfa Laval hygienic, stainless steel housings are designed for full-fit spiral elements. All materials comply with FDA regulations (CFR) Title 21 and the housings are thus suitable for use within the food and pharmaceutical industries.

Advantages

- Quick and simple exchange of spiral elements
- High operating temperature (80°C)
- Low energy consumption and minimised element by-pass flow due to precise diameter and circumference tolerances
- Rack-mounted design
- Low weight and small internal volume
- Large ports and ideal flow distribution

Housings for 3.8", 6.3", 8.0" and 8.3" full-fit spiral elements

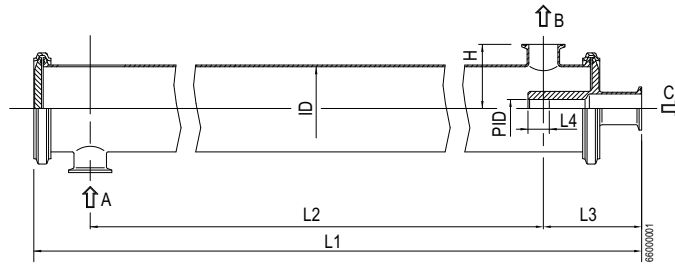
- External surface ground K320
- End cover gaskets in FDA compliant materials
- Tri-clamp connections for feed, retentate and permeate according to ISO 2852
- Internal surface Ra 0.8 µm
- Internal weldings Ra 1.6 µm



Housing designation (order code)

M3.8-5-PN40

3.8	=	Inner diameter of housing (3.8") which corresponds to the outer diameter of the spiral element
5	=	Number of spiral elements which can be loaded
PN40	=	Pressure rating



Drawing of M6.3 housing

A = Feed
B = Retentate
C = Permeate

Type (Order Code)	Housing							Port connections (TC, ISO, Nominal Size)		
	L1	L2	L3	L4	ID	PID	H	Feed and retentate	Permeate	
M2.5	PN64 17"	662	515	90	25	66	21.1	50.5	19	1/2"
	PN64 38"	1197	1050	90	25	66	21.1	50.5	19	1/2"
M3.8-	1-PN40	1250	1060	115	25	97.6	21.1	75	38	25
	2-PN40	2240	2050	115	25	97.6	21.1	75	38	25
	3-PN40	3230	3040	115	25	97.6	21.1	75	38	25
	4-PN40	4220	4030	115	25	97.6	21.1	75	38	25
	5-PN40	5210	5020	115	25	97.6	21.1	75	38	25
M6.3-	1-PN16	1260	1070	109	40	163.1	28.9	108	51	38
	2-PN16	2250	2060	109	40	163.1	28.9	108	51	38
	3-PN16	3240	3050	109	40	163.1	28.9	108	51	38
M8.0-	1-PN16	1325	1085	137	40	203.0	28.9	135	51	38
	2-PN16	2315	2075	137	40	203.0	28.9	135	51	38
	3-PN16	3305	3065	137	40	203.0	28.9	135	51	38
M8.0-	1-PN40	1406	1123	155	40	203.0	28.9	157	51	38
	2-PN40	2422	2139	155	40	203.0	28.9	157	51	38
	3-PN40	3437	3154	155	40	203.0	28.9	157	51	38
	4-PN40	4457	4174	155	40	203.0	28.9	157	51	38
	5-PN40	5473	5190	155	40	203.0	28.9	157	51	38
M8.0-	1-PN64	1402	1155	137	40	203.0	28.9	151	51	38
	2-PN64	2422	2175	137	40	203.0	28.9	151	51	38
	3-PN64	3437	3190	137	40	203.0	28.9	151	51	38
	4-PN64	4457	4210	137	40	203.0	28.9	151	51	38
	5-PN64	5477	5230	137	40	203.0	28.9	151	51	38
M8.3-	1-PN10	1319	1085	137	40	213.1	28.9	138.1	63.5	38
	2-PN10	2301	2067	137	40	213.1	28.9	138.1	63.5	38
	3-PN10	3283	3049	137	40	213.1	28.9	138.1	63.5	38
	4-PN10	4265	4031	137	40	213.1	28.9	138.1	63.5	38

Other types of housings are available on request.

Pipe, end covers and ports in stainless steel (AISI 316L or equal).

Total length of spiral elements and ATD's must be less than dimension L2 minus feed port dimension.

One pair of saddles and straps per housing is included.

Housing end cover closures:

Clamp ring is used for housings with pressure rating \leq 16 bar and for 3.8" housings with pressure rating 40 bar. Segmented lock rings are used for other housings.

Alfa Laval safety filters

Safety filters for membrane filtration systems

Introduction

The safety filters from Alfa Laval for membrane filtration systems are particle-retaining slot tube filters in a sanitary design.

The safety filters are available in standard sizes of 38 mm, 51 mm and 76 mm.

The filter cartridges have 100 micron slots and can be mounted and dismantled without the use of tools. Optional filter cartridges of 50, 200 and 300 micron are available upon request.

All parts are made of stainless steel (AISI 316L).



The product is suitable for food contact. Declaration of compliance can be provided on request.



Technical data

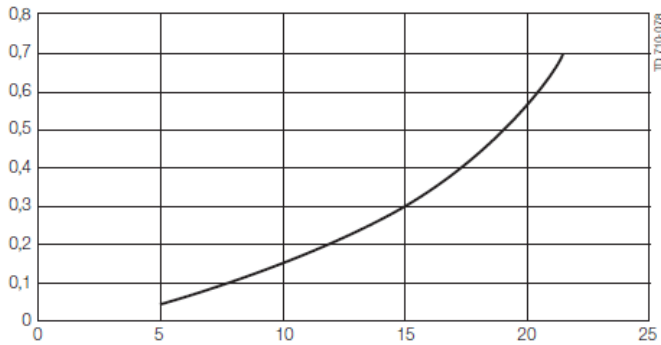
Safety filter	38 mm	51 mm	76 mm
Max. pressure	25 bar	20 bar	15 bar
Max. temperature	80°C	80°C	80°C
Liquid volume	0.4 litres	1.1 litres	2.5 litres
Connection (for liquid inlet and outlet)	Outer diameter 38 x 1.2 mm pipe	Outer diameter 51 x 2 mm pipe	Outer diameter 76 x 2 mm pipe
Weight	1.4 kg	6 kg	7.9 kg
Code numbers			
Filter house	517122	104993	104998
Filter cartridge	104984	104983	104986
Clamp ring	104290	104302	104149
Clamp gasket, nitrile	104101	104125	104086
Options ¹			
Clamp gasket, EPDM	529192	529194	529195
Filter cartridge, 50 micron	502619	525514	517154
Filter cartridge, 200 micron	104960	104961	104979
Filter cartridge, 300 micron	518946	104962	104991

¹ For other options, please contact Alfa Laval

Characteristics and dimensions

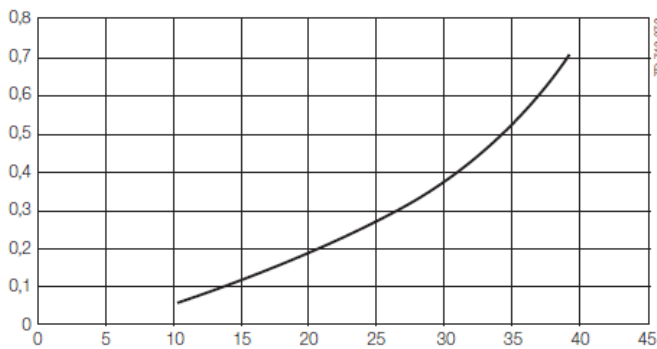
Safety Filter - 38 mm (1.5")

Characteristics (100 micron filter)



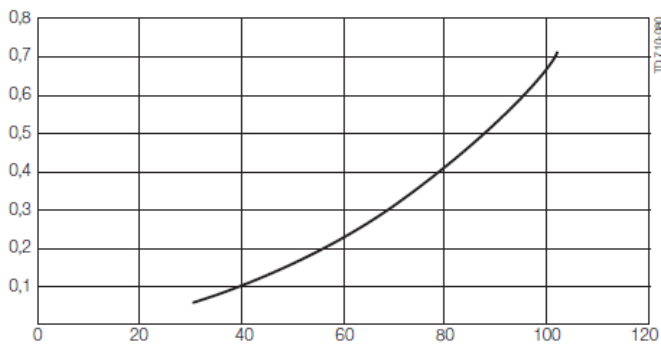
Safety Filter - 51 mm (2")

Characteristics (100 micron filter)

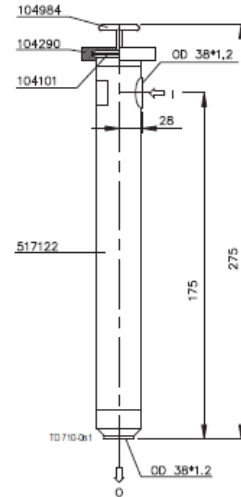


Safety Filter - 76 mm (3")

Characteristics (100 micron filter)



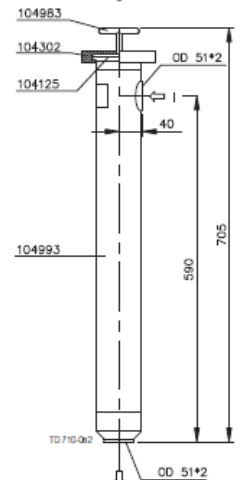
Dimensions



I: Inlet

O: Outlet

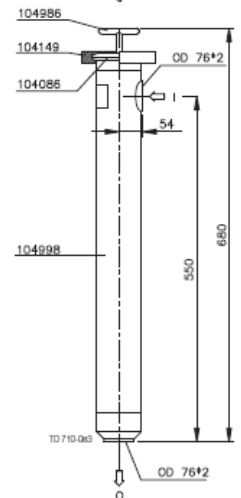
Dimensions



I: Inlet

O: Outlet

Dimensions



I: Inlet

O: Outlet

Архангельск (8182)63-90-72
Астана (7172)727-132
Астрахань (8512)99-46-04
Барнаул (3852)73-04-60
Белгород (4722)40-23-64
Брянск (4832)59-03-52
Владивосток (423)249-28-31
Волгоград (844)278-03-48
Вологда (8172)26-41-59
Воронеж (473)204-51-73
Екатеринбург (343)384-55-89
Иваново (4932)77-34-06

Ижевск (3412)26-03-58
Иркутск (395)279-98-46
Казань (843)206-01-48
Калининград (4012)72-03-81
Калуга (4842)92-23-67
Кемерово (3842)65-04-62
Киров (8332)68-02-04
Краснодар (861)203-40-90
Красноярск (391)204-63-61
Курск (4712)77-13-04
Липецк (4742)52-20-81
Киргизия (996)312-96-26-47

Магнитогорск (3519)55-03-13
Москва (495)268-04-70
Мурманск (8152)59-64-93
Набережные Челны (8552)20-53-41
Нижний Новгород (831)429-08-12
Новокузнецк (3843)20-46-81
Новосибирск (383)227-86-73
Омск (3812)21-46-40
Орел (4862)44-53-42
Оренбург (3532)37-68-04
Пенза (8412)22-31-16
Казахстан (772)734-952-31

Пермь (342)205-81-47
Ростов-на-Дону (863)308-18-15
Рязань (4912)46-61-64
Самара (846)206-03-16
Санкт-Петербург (812)309-46-40
Саратов (845)249-38-78
Севастополь (8692)22-31-93
Симферополь (3652)67-13-56
Смоленск (4812)29-41-54
Сочи (862)225-72-31
Ставрополь (8652)20-65-13
Таджикистан (992)427-82-92-69

Сургут (3462)77-98-35
Тверь (4822)63-31-35
Томск (3822)98-41-53
Тула (4872)74-02-29
Тюмень (3452)66-21-18
Ульяновск (8422)24-23-59
Уфа (347)229-48-12
Хабаровск (4212)92-98-04
Челябинск (351)202-03-61
Череповец (8202)49-02-64
Ярославль (4852)69-52-93